

Travelling South Africa? Let us guide you.

- Developing all the tourism route maps of South Africa.
- Online quality accommodation and safaris.
- Online flight and car rental bookings.
- Safari bookings.
- Find us at www.greaterkruger.co.za
- www.hoedspruit.net
- www.flyouthofafrica.co.za

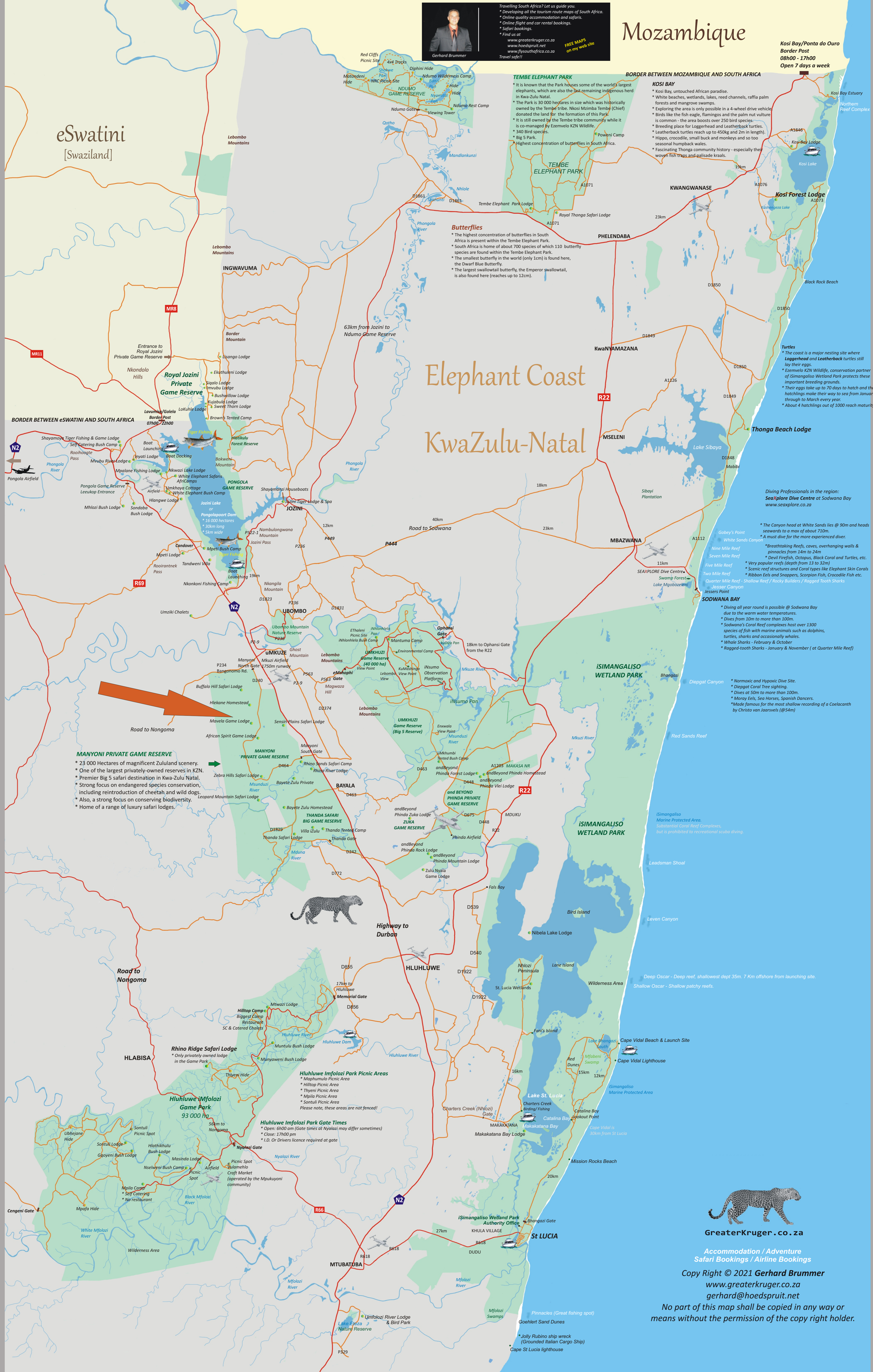
FREE MAPS on my web site

Travelsafe!!



Mozambique

Kosi Bay/Ponta do Ouro Border Post
08H00 - 17H00
Open 7 days a week



eSwatini
[Swaziland]

Elephant Coast KwaZulu-Natal

TEMBE ELEPHANT PARK

- It is known that the Park houses some of the world's largest elephants, which are also the last remaining indigenous herd in Kwa-Zulu Natal.
- The Park is 30 000 hectares in size which was historically owned by the Tembe tribe. Nkosi Mzimba Tembe (Chief) donated the land for the formation of this Park.
- It is still owned by the Tembe tribe community while it is co-managed by Ezemvelo KZN Wildlife.
- 340 Bird species.
- Big 5 Park.
- Highest concentration of butterflies in South Africa.

Butterflies

- The highest concentration of butterflies in South Africa is present within the Tembe Elephant Park.
- South Africa is home of about 700 species of which 110 butterfly species are found within the Tembe Elephant Park.
- The smallest butterfly in the world (only 1cm) is found here, the Dwarf Blue Butterfly.
- The largest swallowtail butterfly, the Emperor swallowtail, is also found here (reaches up to 12cm).

KOSI BAY

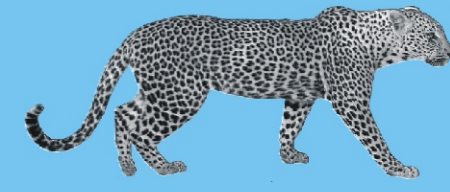
- Kosi Bay, untouched African paradise.
- White beaches, wetlands, lakes, reed channels, raffia palm forests and mangrove swamps.
- Exploring the area is only possible in a 4-wheel drive vehicle.
- Birds like the fish eagle, flamingos and the palm nut vulture is common - the area boasts over 250 bird species.
- Breeding places for Loggerhead and Leatherback turtles.
- Leatherback turtles reach up to 450kg and 2m in length!
- Hippo, crocodile, small buck and monkeys and so too seasonal humpback whales.
- Fascinating Thonga community history - especially their woyof fish traps and gallsade kraals.

Turtles

- The coast is a major nesting site where **Loggerhead** and **Leatherback** turtles still lay their eggs.
- Ezemvelo KZN Wildlife, conservation partner of Simangaliso Wetland Park protects these important breeding grounds.
- Their eggs take up to 70 days to hatch and the hatchlings make their way to sea from January through to March every year.
- About 4 hatchlings out of 1000 reach maturity.

MANYONI PRIVATE GAME RESERVE

- 23 000 Hectares of magnificent Zululand scenery.
- One of the largest privately-owned reserves in KZN.
- Premier Big 5 safari destination in Kwa-Zulu Natal.
- Strong focus on endangered species conservation, including reintroduction of cheetah and wild dogs.
- Also, a strong focus on conserving biodiversity.
- Home of a range of luxury safari lodges.



GreaterKruger.co.za

Accommodation / Adventure
Safari Bookings / Airline Bookings

Copy Right © 2021 Gerhard Brummer
www.greaterkruger.co.za
gerhard@hoedspruit.net

No part of this map shall be copied in any way or means without the permission of the copy right holder.